

Woodland Hills 2 Project Take-offs

Item No. 1 - **Lot Area:** Total Lot Area = 269,856.83 sq ft (6.1951 Ac)

Item No. 2 - **Building Coverage:** Total Building Coverage = 50,950 sq ft (18.9 % Coverage)
Single-family Units #A = 15,600 sq ft
Single-family Units # B = 19,600 sq ft
Single-family Units # C = 15,750 sq ft

Item No. 3 - **Paved Surfaces:** 37,646 sq ft (14.7% Coverage)

Item No. 4 - **Landscaped Area:** 3,500 sq ft (1.3% Coverage)
Single-family Units = 34,000 sq ft (12.6% Coverage)

Item No. 5 - **Open Space:** Undisturbed Open Space= 103,135 sq ft (38.2% Coverage)
Private Open Space = 40,626 sq ft (17.7% Coverage)

Item No. 6- **Recreational Facilities:** None at this time

Item No. 7- **Grading:**
Inner Corridor: Cut = 10,700 cu yd Fill = 10,700 cu yd Total = 21,400 cu yd

Export/Import = 0 cu yd

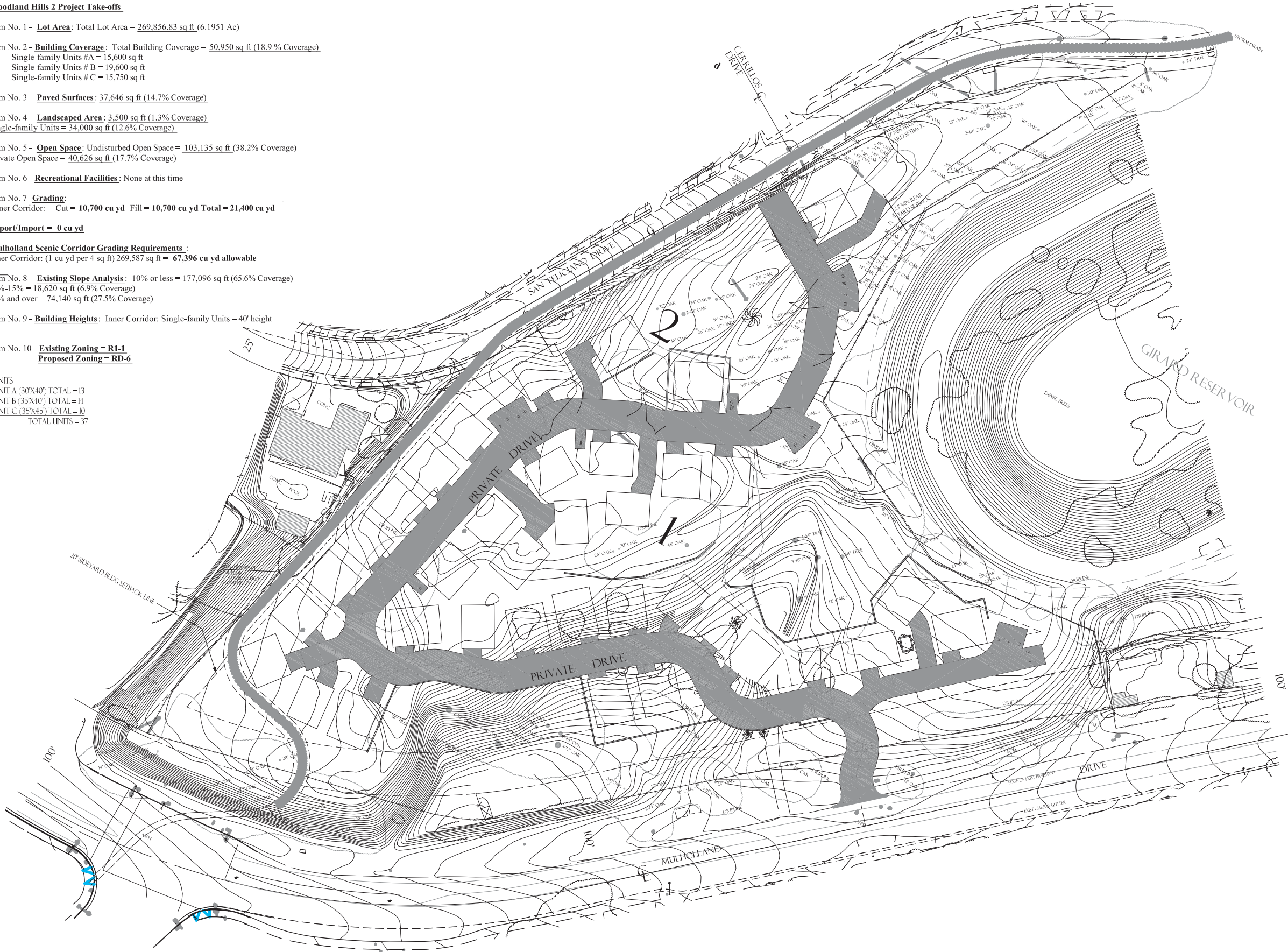
Mulholland Scenic Corridor Grading Requirements :
Inner Corridor: (1 cu yd per 4 sq ft) 269,587 sq ft = 67,396 cu yd allowable

Item No. 8 - **Existing Slope Analysis:** 10% or less = 177,096 sq ft (65.6% Coverage)
10%-15% = 18,620 sq ft (6.9% Coverage)
15% and over = 74,140 sq ft (27.5% Coverage)

Item No. 9 - **Building Heights:** Inner Corridor: Single-family Units = 40' height

Item No. 10 - **Existing Zoning = R1-1**
Proposed Zoning = RD-6

UNITS
UNIT A (30'X40') TOTAL = 13
UNIT B (35'X40') TOTAL = 14
UNIT C (35'X45') TOTAL = 10
TOTAL UNITS = 37



- LEGEND:
- AC ASPHALTIC CONCRETE
 - ASPH ASPHALT
 - CONC CONCRETE
 - FH FIRE HYDRANT
 - PP POWER POLE
 - SMH SEWER MANHOLE
 - SS SANITARY SEWER
 - TSPB TRAFFIC SIGNAL PULL BOX
 - WM WATER METER
 - WV WATER VALVE
 - G PS GUEST PARKING SPACE
 - INDICATES STREET LIGHT
 - INDICATES STREET LIGHT & TRAFFIC SIGNAL
 - INDICATES SIGN
 - INDICATES PROPOSED DRIVEWAY
 - INDICATES STORM DRAIN